



TRANSCOM Concept of Operations Project

ConSysTec applies the "Systems Engineering Process" to almost all of our projects to help customers meet their specific goals and objectives. We also apply this process to manage our project outputs. The TRANSCOM Concept of Operations (Con Ops) is a perfect example.

TRANSCOM is a coalition of 16 transportation and public safety agencies in the New York/New Jersey/Connecticut Tri-State region.

The TRANSCOM Systems Con Ops documents the existing *and* future user needs and system features of TRANSCOM's system. In addition, it is presented in non-technical terms and from a user's perspective. It also articulates what the TRANSCOM Systems do, are planned to do, what data is used and how it is processed.

The primary goal of the TRANSCOM Systems is to develop a common platform where agency center systems can exchange (publish/receive) transportation information (incidents, construction, special events, roadway and transit network status, parking occupancy, and message sign data) within the Region. The integration of transportation and data management systems discussed in this section serve to generate a more efficient regional transportation system.

Working with TRANSCOM staff, ConSysTec was able to create a Con Ops that focuses on five key areas, Event Management, Data Interfaces, Data Management, Data Exchange, and Performance and Decision Support.

TRANSCOM's Event Management systems provides support for regional event management activities, including incidents, special events, and construction that may affect the operation of the transportation system and the safety of users.

The Data Interfaces facilitate the coordination of traffic, transit, and weather data throughout the region.

Data Management supports all aspects of transportation management (Events, Interfaces, Data Exchange) by storing, archiving, and processing data to fuel informed, calculated, and adaptive decisions by both operators and users throughout the region.

The TRANSCOM Data Exchange (DE) is a secure API that allows agencies, including centers and devices, to access real-time transportation information gathered by TRANSCOM.

Lastly, Transportation Performance and Decision Support Applications are some of the benefits gained from an integrated regional data management system. The Performance

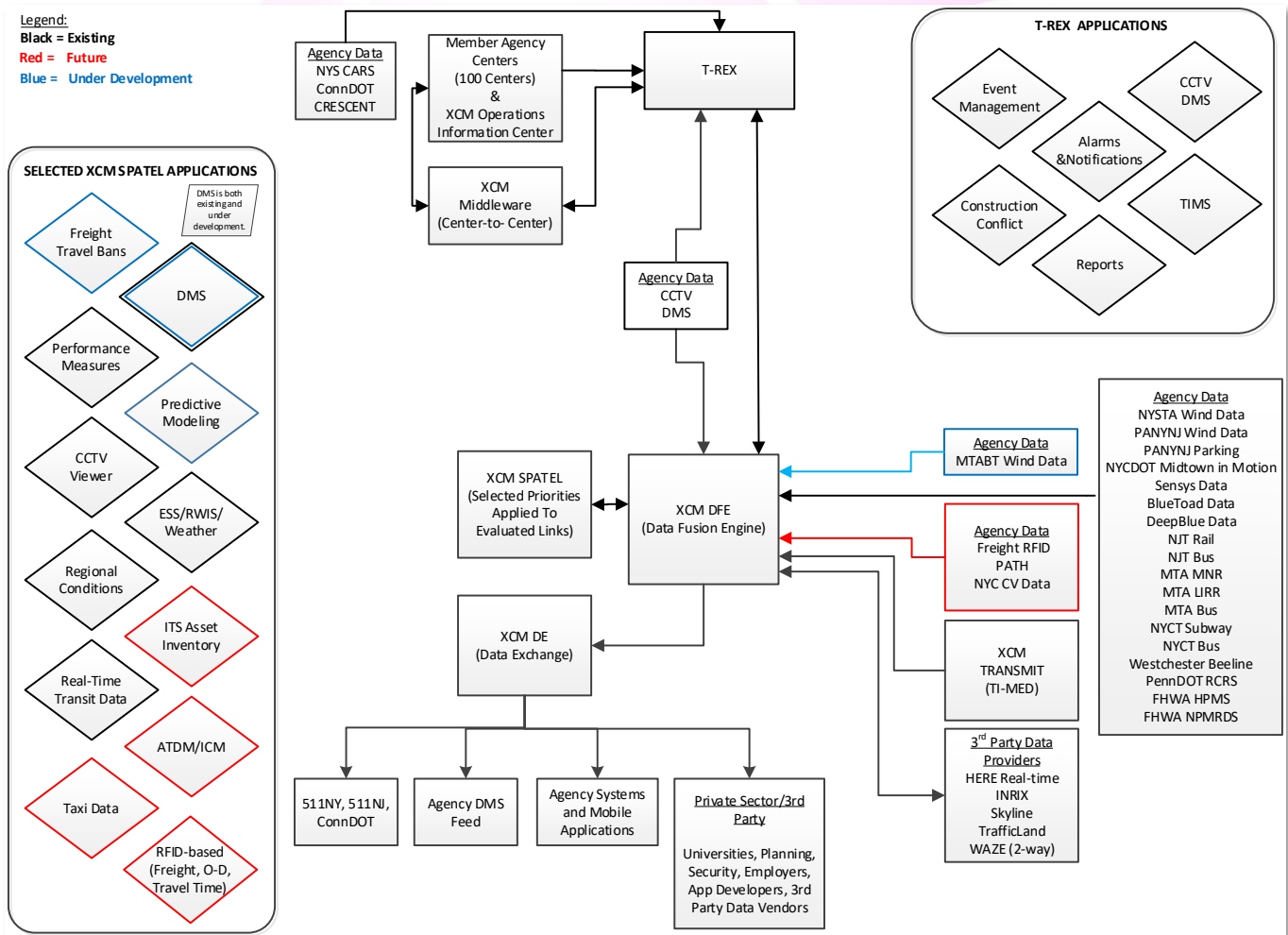




Measures and Decision Support Applications gather information from the TRANSCOM Data Fusion Engine and other systems to calculate thresholds by which to monitor and manage alerts, notify member agencies about potential roadway/rail maintenance issues, and allows for the monitoring and management of individual multimodal facilities throughout the region's transportation network.

The Performance Measures System also provides transportation situational awareness by monitoring the operational status of facilities and roadways within the region.

The diagram below shows the relationships between all the elements of TRANSCOM's systems as spelled out in the Con Ops and other systems throughout the Region.



TRANSCOM Systems Overview 2021

For more information about how ConSysTec can help your organization with its Concept of Operations, visit us at www.consysotec.com or scan the QR Code below.

